

Thank you for purchasing **OPCOM Farm** GrowFrame, the indoor hydroponics growing system. It is designed with easy to use and efficient growth by one-touch AUTO mode. It holds up to 20 plants capacity. Read the quick guide carefully before setting it up. For detailed user guide video, please scan the QR code or visit GrowFrame page at <http://www.opcomfarm.com/Growframe>



A. Assembly

A1. Remove all the parts from box and check all the accessories.



A2. Easy Set Up

- 1 Raise the body of GrowFrame, adjust the stand on the back of the frame and stablize it
- 2 Connect and plug power outlet.
- 3 According to Chart I, turn on the power and test the unit.
- 4 Adjust LED Light to the right angle.
- 5 Fill 0.7 gallons/2.7L water into the water tank.
- 6 Place on the table or screw for solid installation and hang up on the wall.

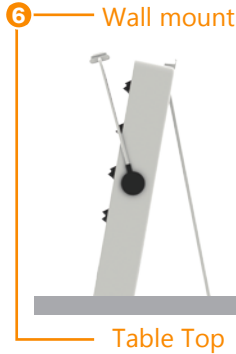
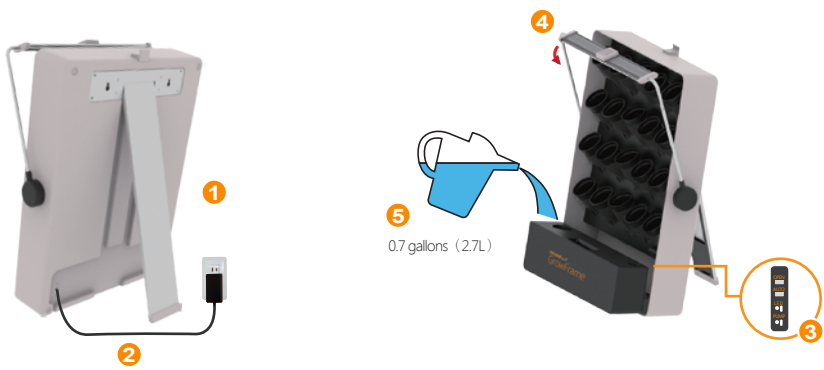
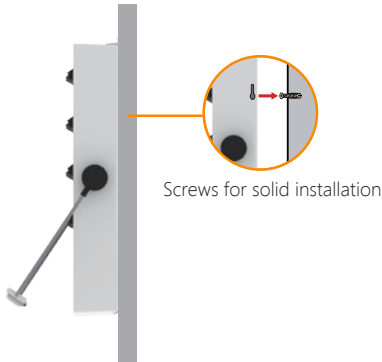


Chart I: Control Box Mode

Fuction	Status	Operation	Light	Time(On/Off)	Note
Auto	Young plant	One Click	●	LED: 14H/10H Pump: 24 cycles/day	10 mins/cycle
	Growth	One Click	●	LED: 14H/10H Pump: 24 cycles/day	10 mins/cycle
	Succulent	One Click	○	LED: 14H/10H Pump: 1 cycles/5 day	10 mins/cycle
LED	ON	One Click	●	24H/0H	
	High	One Click	●	16H/8H	
	Low	One Click	●	8H/16H	
	OFF	One Click	●	0H/24H	
Pump	ON	One Click	●	48 cycles/ day	10 mins/cycle
	High	One Click	●	36 cycles/ day	10 mins/cycle
	Low	One Click	●	1 cycles/ 5day	10 mins/cycle
	OFF	One Click	●	0 cycles/ day	

* you can reset the product timeline by pushing the LED button for 2 sec.

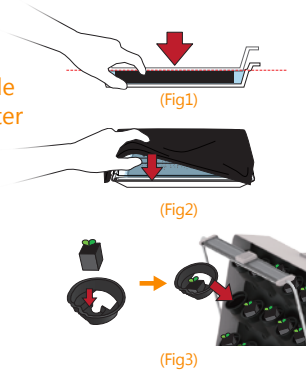
☑ Please read and follow every steps to avoid any malfunction.

B. Seedling

B1. Sprout stage

- 1. Add water into the seedling tray, up to the water (red) line.(Fig1)
- 2. Open Grow Sponge package, put the sponge into water of seedling tray(make sure the front side with the seed label is up), press the sponge into water 5 seconds and let the sponge absorb water completely.(Fig1)
- 3. Place the seedling tray with cover in the shade or cover it with black cloth(to block light).(Fig2)
- 4. Spray water to Sponges and keep them wet everyday.(Fig3)
- 5. During 7 days, find the sprouted one in the tray; pick it out, and move it into product and to next stage: B2. Young Plant Stage.
- 6. Discard unsprouted sponge after regular germination time.

* Different plant may have different germination time, please check it before plant.



Basil, Lemon Balm	Planting Time	LED Mode	Pump Mode	Nourishment	T (°C)	RH	Notes
Sprout Stage	Day 0~7	N/A	N/A	N/A	20°C - 25°C	80%	The sponge is fully wetin seedling tray.
Young plant stage	Day 3~14	Auto(Young Plant)	Auto(Young Plant)	NT-Starter	15°C - 30°C	45%-70%	Adjust LED lights position
Growing Stage	After Day 14	Auto(Growth)	Auto(Growth)	NT-Starter	15°C - 30°C	45%-70%	

* Please keep the seedling sponge package in refrigerator if you don't use it.
* For your expected plant amout, you can refer to the sprout rate of 1st planting cycle.
* If you need more planting information, please vist to www.opcomfarm.com to read "Plant Q&A".

B2. Young plant stage

- 1. In each sponge, keep the strongest and thicker one and remove others.
- 2. Add 0.7 gallons water to the tank.
- 3. During young plant stage (around 2 inches), turn on the power to Auto mode(Young Plant) .
Please refer to the Chart I & II.
- 4. Adjust LED light angle to let the light cover on all plants.

B3. Growing Stage

- 1. When plants grow to 3-4 inches height, switch to Auto Mode(Growth), refer to Chart I & II.
 - 2. Harvest the larger plants for consumption and keep smaller plants growing.
- * For time saving, sow the new seeds in sprout tray one week before you start next planting process.
* When water level is less than 1/3 of the water tank full, change to new water with NT-Adjuste

B2. Young Plant

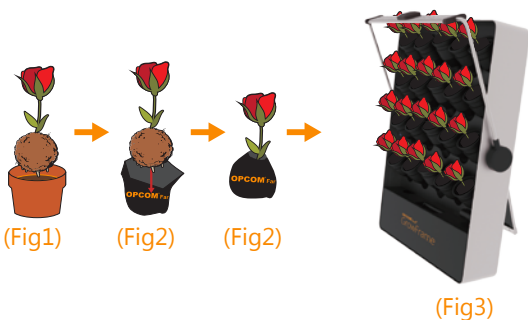


C. Planting: Buy plants from local stores

- 1 Choose a suitable filter bag size for 2" pot, put it into the filter bag and tie the strings, Then put the plants into planting site



- 2 Soil Free: Remove pot(Fig1) and put into filter bag(Fig2) and then move to the product(Fig3).

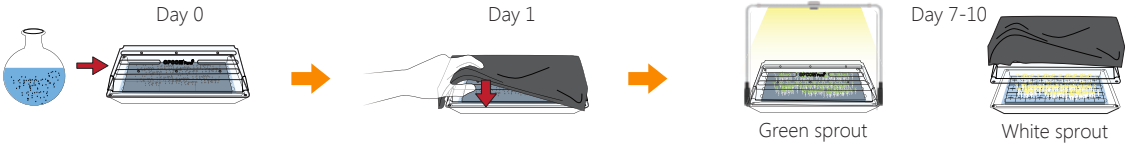


C2. Flower Selection

Formaldehyde Clean				
Rainbow Tree	Chlorophytum	Lucky Bamboo	Chrysanthemum	Snake Plant
Trichloroethylene Clean				
White Bunny Ears	Golden barrel	Mottled Spurge	Turk's Cap Cactus	Golden ball cactus
Carbon dioxide & Formaldehyde Clean				
Dot plant	Wax Plant	Dragon tree	Barberton daisy	Dragon tree
Xylene Clean				
Dumbcane	Tuberous Sword Fern	Flaming lily	Evergreen	Pteris cretica
Carbon Monoxide Clean				
Ivy	Peace Lilies	Parlour Palm	Aloe	Spiral-leaved croton

D. Sprouts and Microgreens.

- 1. Before your next seedling, take advantage of the seedling tray for sprouts and microgreens. It takes 7-10 days to harvest.
- 2. Put seeds in warm water(recommeded temperature is 35°C , not over 40°C) for 24 hours.
- 3. Cover the sponges with wet paper towels
- 4. Place the seedling tray with cover in the shade or cover it with black cloth.
- 5. After germination, during the growing stage, keep green sprout under the light and white sprout in the shade or cover it with black cloth; Around 7-10 days, you can harvest.



E. Optional Accessories

- 1. Pod Stick 3x30PK (per seed)
- 3. Grow Sponge (D65*H50mm) with tray – 6x10PK
- 4. OPCOM Wave Clip

F. Maintenance

- F1. Add Water**
- 1. Add water when water level is less than 1/3 of the water tank (you may also add flower nutrient if you obtain it)
- F2. Change Water**
- 1. Change new water with NT-Starter when water is less than 1/3 tank.
 - 2. Change new water with different nutrient for different flowers/ plants.

G. Troubleshooting

Issue	Checkpoints / Solution
Lamps are not lighting up.	Make sure all power cables are connected.
	Power button is turned ON.
	Make sure LED status is ON.
	If on HI or LOW Lights turn on by pre-programmed intervals. Your lights function normally even they are not always on.
Insure the pump intall to the tube correctly.	Make sure Pump status is not OFF.
	If on HI or LOW turns on by pre-programmed intervals. Your pump functions normally even they are not always on.
	If the pump doesn't draw the water, replace a new one.
The lamp or the pump stopped working after a few hours	OPCOM Farm's control box is designed with Auto cycles, which will turn the lamps and the pump on and off periodically. This is to mimic an outside daily cycle, offer the best growing condition for your and plants, save you energy.

H. Q&A

Question	Answer
Pump was running without water.	This can shorten the life of the pump.Maintain proper water level. Always keep water above the red line.
What type of LED Light on the Grow-Frame?	The lamps provided with your GrowFrame is OPCOM 20W LED Growth Lamp. This is suitable for most plants' growth.



GrowFrame
Art Garden Frame



Quick Guide Manual